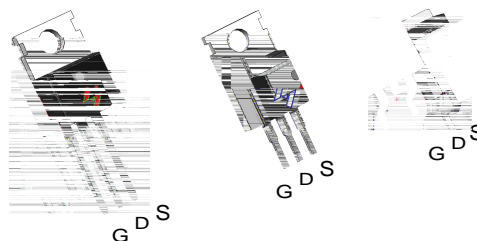




## Feature

- 
- 
- 
- 

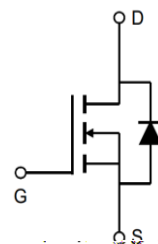
## Pin Description



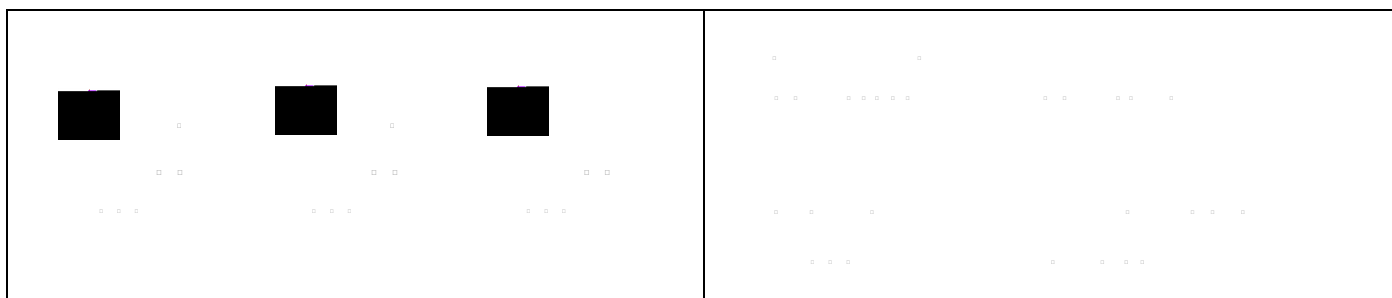
TO-220FB-3L      TO-220FB-3S      TO-263-2L

## Applications

- 
- 



## Ordering and Marking Information



# HY1904P/B/M

## Absolute Maximum Ratings

Symbol	Parameter	Rating	Unit
<b>Common Ratings</b>			
	°C		
<b>Mounted on Large Heat Sink</b>			
$\theta$			
$\theta$			

.....  
 .....  
 ..... °C .....

## Electrical Characteristics °C

Symbol	Parameter	Test Conditions	HY1904			Unit
			Min	Typ.	Max	
<b>Static Characteristics</b>						
.....						

# HY1904P/B/M

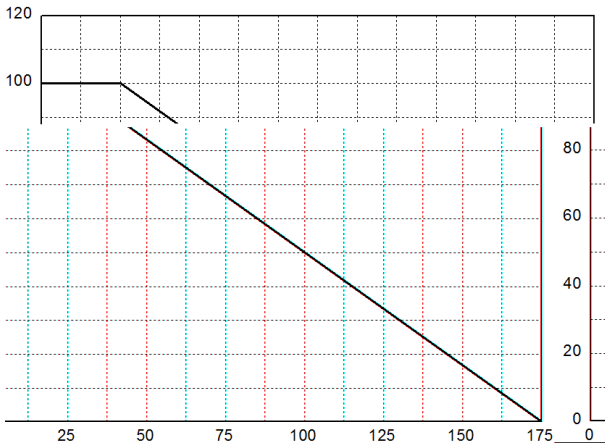
## Electrical Characteristics (Cont.)

°C . . . . .

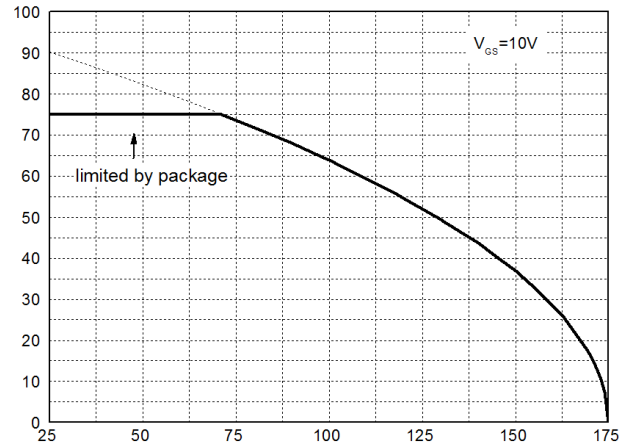
Symbol	Parameter	Test Conditions	HY1904			Unit
			Min	Typ.	Max	
<b>Dynamic Characteristics</b>						
<b>Gate Charge Characteristics</b>						

**Typical Operating Characteristics**

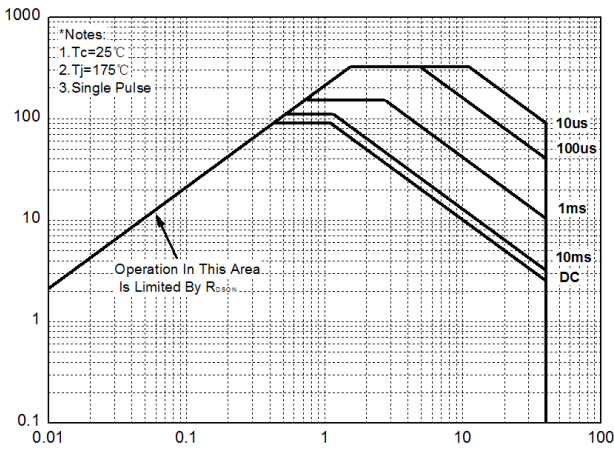
**Figure 1: Power Dissipation**



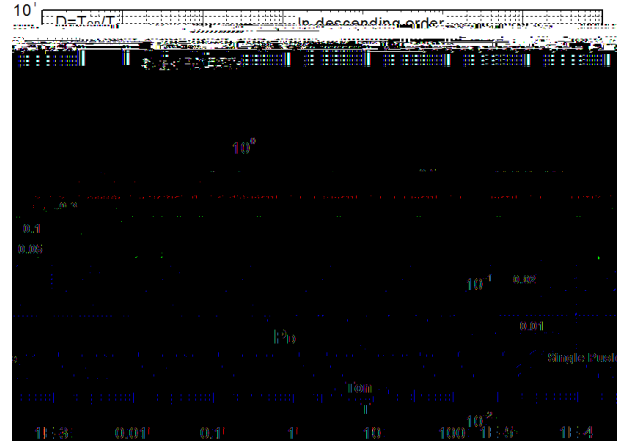
**Figure 2: Drain Current**



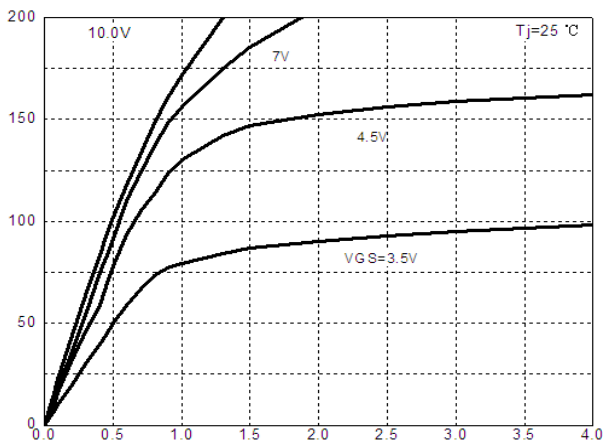
**Figure 3: Safe Operation Area**



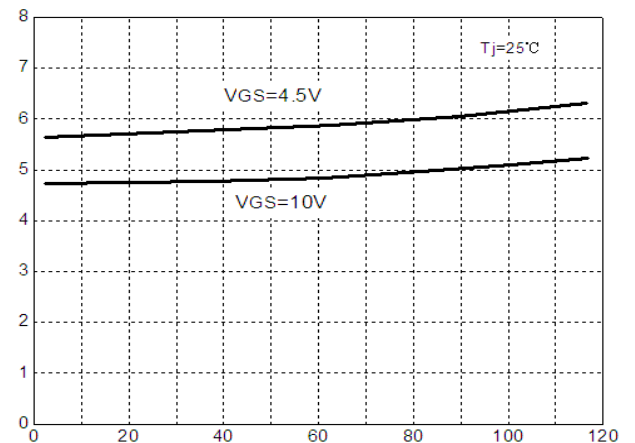
**Figure 4: Thermal Transient Impedance**



**Figure 5: Output Characteristics**



**Figure 6: Drain-Source On Resistance**



# **HY1904P/B/M**

---

## **Typical Operating Characteristics(Cont.)**

**Figure 7: On-Resistance vs. Temperature**

**Figure 8: Source-Drain Diode Forward**

.....

**Figure 9: Capacitance Characteristics**

**Figure 10: Gate Charge Characteristics**

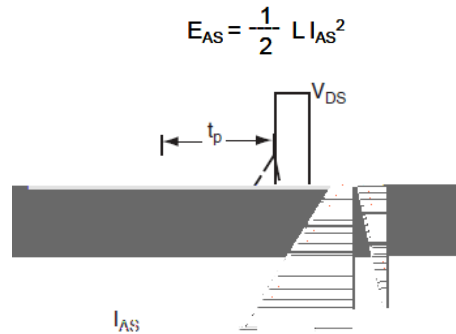
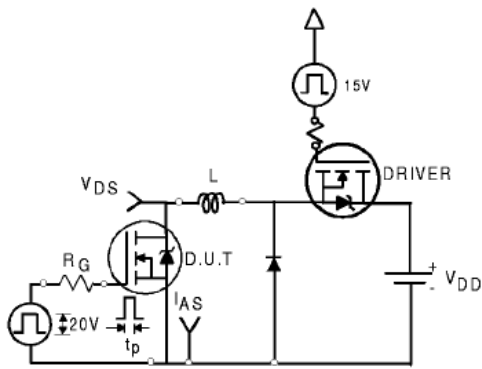
-  
-  
-  
-  
-

o  
o  
o  
o  
o  
o  
o  
o  
o

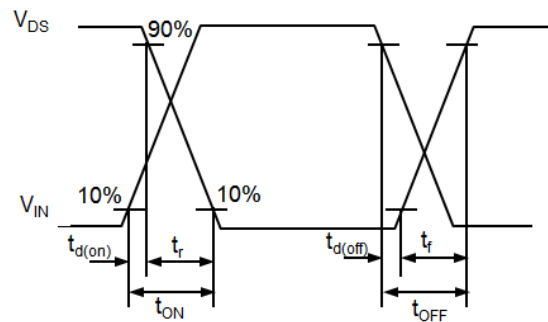
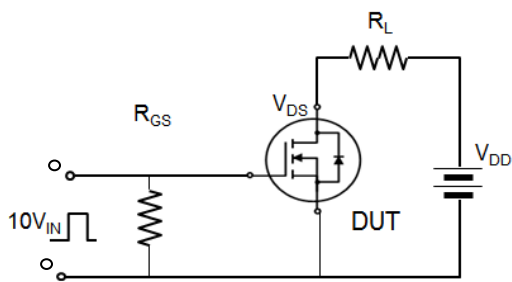
.....

.....

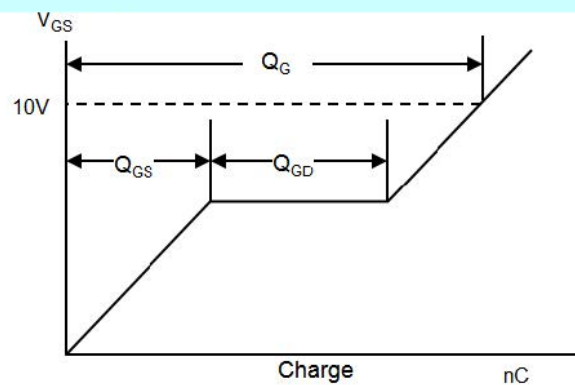
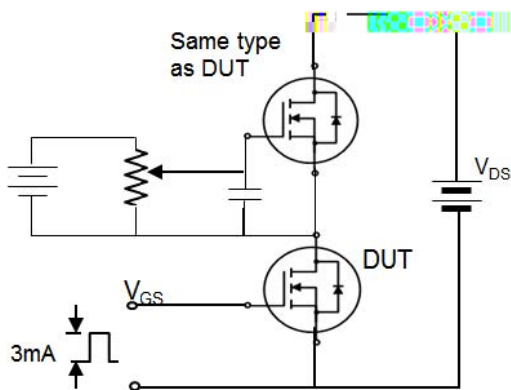
### Avalanche Test Circuit



### Switching Time Test Circuit



### Gate Charge Test Circuit



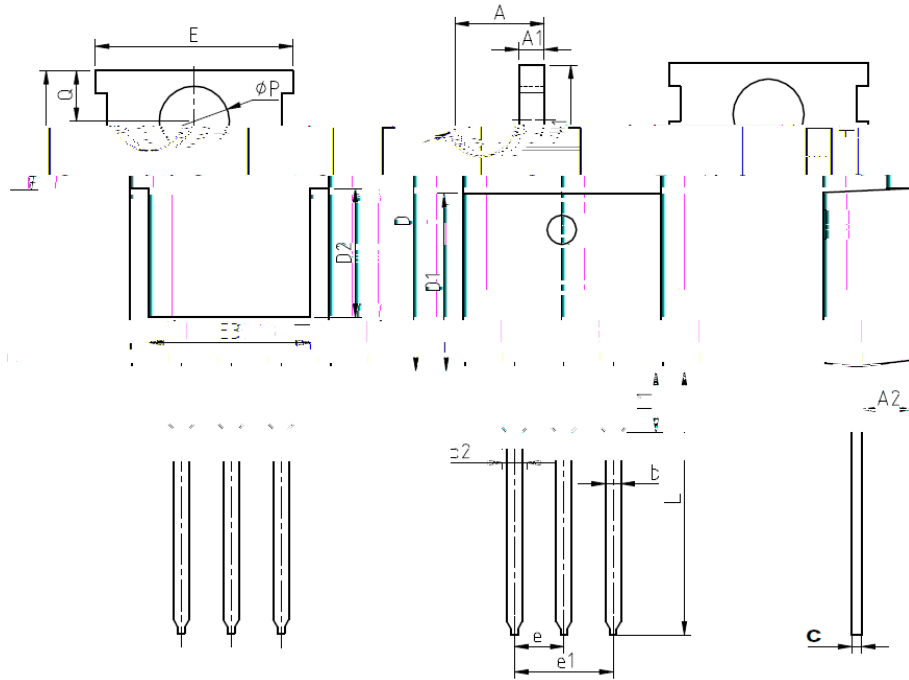
# HY1904P/B/M

## Device Per Unit

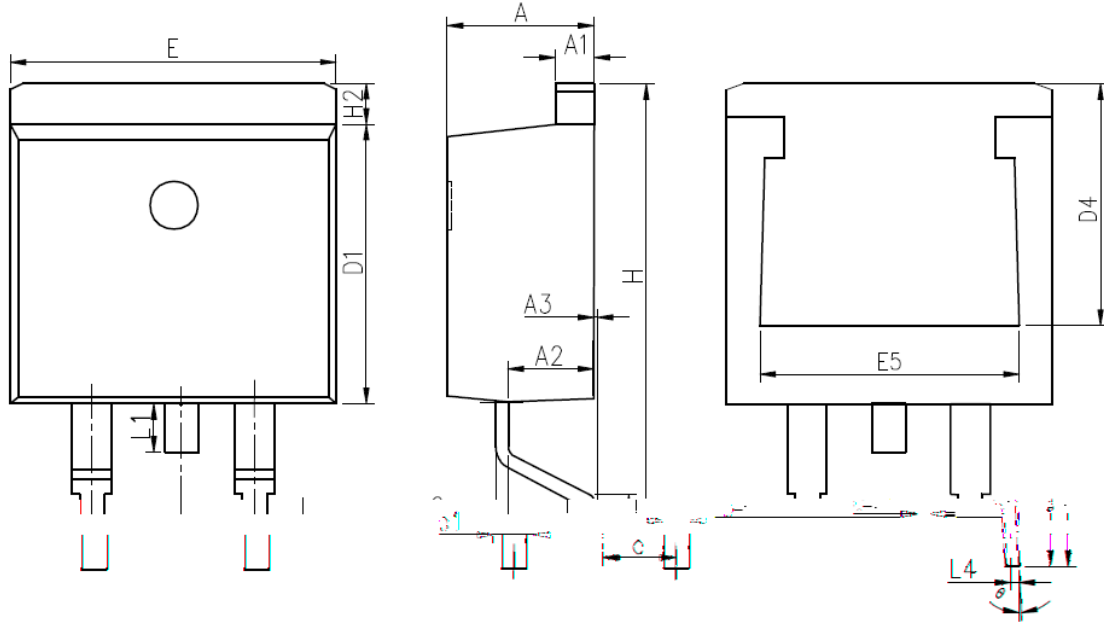
Package Type	Unit	Quantity
.....		..
.....		..
.....		..

## Package Information

TO-220FB-3L



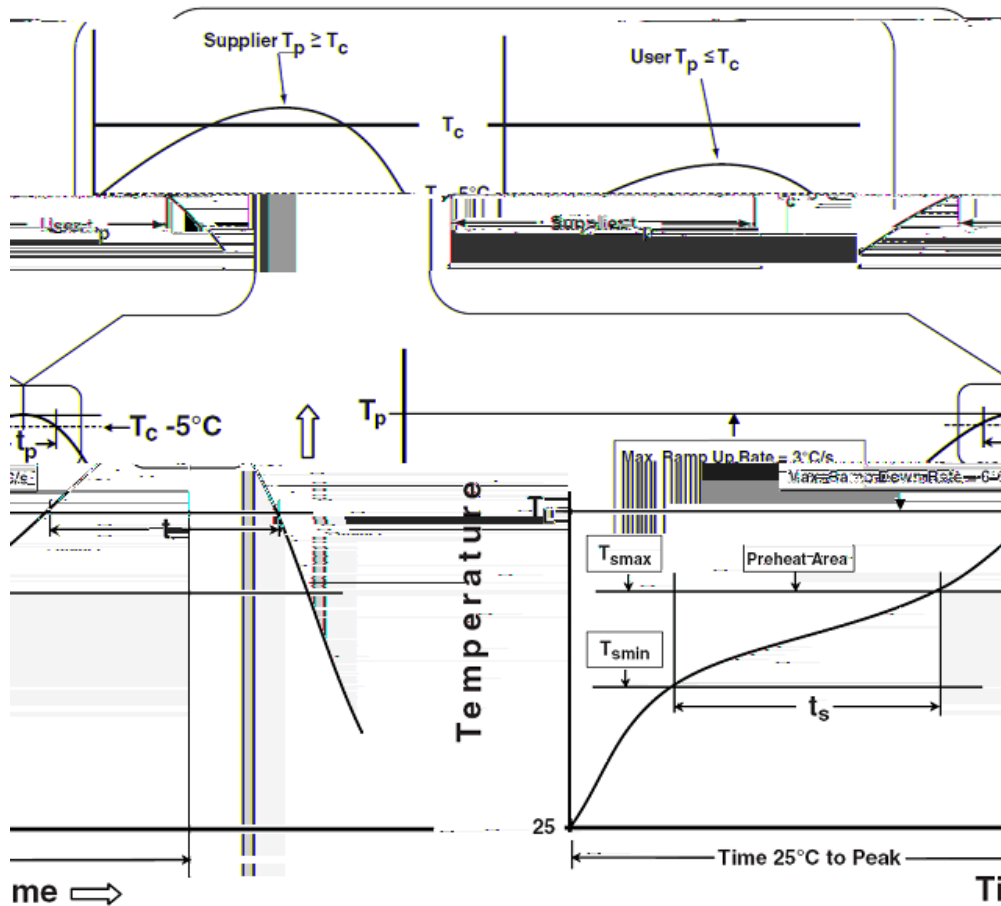

TO-263-2L








Classification Profile



Classification Reflow Profiles

Profile Feature	Sn-Pb Eutectic Assembly	Pb-Free Assembly
Preheat & Soak		

# HY1904P/B/M

---

Package Thickness	Volume mm <350	Volume mm 350

Package Thickness	Volume mm <350	Volume mm 350-2000	Volume mm 2000

---